



EXTERIOR LIGHTING PROGRAM

MAW-206  
253 Boston St  
Topsfield, MA 01983

DRAWING INDEX:

- COVER SHEET
- LU-1 GENERAL NOTES
- LU-2 LUMINAIRE SCHEDULE
- LU-3 OVERALL SITE PLAN
- LU-4 FULL SITE PHOTOMETRICS PLAN AT GRADE
- LU-5 FIXTURE REMOVAL PLAN
- LU-6 DIMENSIONING PLAN
- LU-7 LANDSCAPING PLAN
- LU-8 ATM COMPLIANCE AREA PHOTOMETRICS PLAN - FOR BANK USE ONLY
- LU-9 ELEVATIONS



VICINITY MAP

v1 220823



Office: (972) 771-6038  
1629 Smirl Drive, Suite 200, Heath, Texas 75032  
[www.gmr1.com](http://www.gmr1.com)

SCOPE OF WORK	
COUNT	NOTES
2	REPLACE EXISTING FIXTURE
5	REMOVE POLE, BASE & FIXTURE - ADD NEW POLE, BASE & FIXTURE
11	OUT OF SCOPE
1	ADD NEW FIXTURE





CONTRACTOR RESPONSIBILITY NOTES:

1. CONTRACTOR SHALL BE RESPONSIBLE FOR PERMITTING, INCLUDING COORDINATION WITH THE LOCAL JURISDICTION AND ANY ASSOCIATED PERMIT FEES OR PROCESSING. CONTRACTOR SHALL NOTIFY GMR UPON RECEIPT OF PERMIT.
2. CONTRACTOR SHALL BE RESPONSIBLE FOR ALL PERMITTING DOCUMENTS THAT ARE NOT INCLUDED IN THE LIGHTING DESIGN PACKAGE. THESE INCLUDE, BUT ARE NOT LIMITED TO, STAMPED ELECTRICAL DRAWINGS, STAMPED POLE BASE DRAWINGS, AND PROFESSIONAL SURVEYS.
3. SHOULD STAMPED PHOTOMETRIC DRAWINGS BE REQUIRED, CONTRACTOR SHALL ENGAGE LOCAL ENGINEER OR LIGHTING DESIGNER AS REQUIRED TO PROVIDE STAMP ON GMR PHOTOMETRIC DESIGN DOCUMENTS.
4. CONTRACTOR SHALL PROVIDE THE BANKING CENTER NOTIFICATION AT LEAST ONE WEEK IN ADVANCE OF VISITING SITES OR STARTING WORK.
5. CONTRACTOR SHALL VERIFY VOLTAGE REQUIREMENTS FOR FIXTURES PRIOR TO PLACEMENT OF FIXTURE ORDERS.
6. CONTRACTOR TO VERIFY LIGHTING CONTROLS PRIOR TO BEGINNING CONSTRUCTION. SEE LIGHTING CONTROL NOTES.
7. CONTRACTOR SHALL RECEIVE FORMAL APPROVAL FROM GMR ON ANY FIXTURE MODIFICATIONS OR VARIATIONS FROM THE LUMINAIRE SCHEDULE.
8. CONTRACTOR SHALL VERIFY EXISTING AND PROPOSED FIXTURE MOUNTING CONDITIONS IN FIELD. ANY SPECIAL MOUNTING HARDWARE NEEDED FOR PROPOSED FIXTURES SHALL BE THE RESPONSIBILITY OF THE CONTRACTOR.
9. CONTRACTOR SHALL SUPPLY ALL NEW LIGHT POLES. NEW LIGHT POLES SHALL MATCH EXISTING CONDITIONS ON SITE FOR POLE TYPE AND PAINT COLOR.
10. CONTRACTOR SHALL ORDER ALL FIXTURES FROM BORDER STATES IN ACCORDANCE WITH BANK OF AMERICA NATIONAL ACCOUNT. CONTACT NATIONAL ACCOUNT QUOTES DEPARTMENT AT [BOA@BORDERSTATES.COM](mailto:BOA@BORDERSTATES.COM) OR 704-372-3040.
11. CONTRACTOR SHALL PERFORM ALL NECESSARY PATCHING OR REPAINTING FOR ADDED, REMOVED, OR REPLACED FIXTURES.
12. CONTRACTOR SHALL REPAIR ANY DISTURBED AREAS BACK TO EXISTING CONDITION INCLUDING PAVED AREAS, LANDSCAPED AREAS, ETC.
13. CONTRACTOR SHALL VERIFY AND DOCUMENT COMPLETED WORK DURING NIGHT HOURS. ALL FIXTURES MUST BE FUNCTIONAL DURING NIGHT HOURS PRIOR TO SCHEDULING A FINAL SURVEY WITH GMR.
14. CONTRACTOR SHALL PROVIDE BEFORE AND AFTER NIGHT TIME PHOTOS OF THE SITE.
15. CONTRACTOR SHALL UTILIZE THE "BOA ELP INCENTIVE SITE SURVEY FORM" TO DOCUMENT THE EXACT DETAILS OF EACH FIXTURE BEING REMOVED FOR REBATE AND ENERGY SAVINGS CALCULATION PURPOSES.
16. CONTRACTOR SHALL RECEIVE A PUNCHLIST FROM GMR UPON FINAL SURVEY FOR ANY REMAINING ITEMS TO BE COMPLETED.

CONTROLS & ADDITIONAL NOTES:

LIGHTING CONTROL NOTES:

THE CONTRACTOR SHALL VERIFY THE CONTROLS FOR ALL EXTERIOR LIGHTING AND ATM/AHD INTERIOR LOBBIES ON THE SITE (EXCLUDING SIGNAGE) AND ADJUST ACCORDING TO THE FOLLOWING:

- IC3 CONTROL:

CONTRACTOR SHALL VERIFY THAT EXTERIOR LIGHTING CIRCUITS ARE CONTROLLED BY THE CORRECT IC3 CIRCUIT. WHERE EXTERIOR LIGHTING IS INCLUDED ON CONTROL CIRCUITS FOR INTERIOR SYSTEMS, INTERIOR LIGHTING, OR EXTERIOR SIGNAGE, CONTRACTOR SHALL ADJUST EXTERIOR LIGHTING TO THE CORRECT CONTROL CIRCUIT AS REQUIRED.

- PHOTOCELL CONTROL:

CONTRACTOR SHALL REPLACE EXISTING PHOTOCELLS WITH NEW AND INSTALL IN A LOCATION BEST SUITED TO PROVIDE APPROPRIATE LIGHT EXPOSURE SUCH THAT EXTERIOR LIGHTS ARE ON DURING DARKNESS.

- TIME CLOCK CONTROL:

CONTRACTOR SHALL VERIFY LOCATION OF TIME CLOCK. IF TIME CLOCK IS IN ELECTRICAL ROOM ALONG WITH IC3 CONTROLS, CONTRACTOR SHALL ADJUST CIRCUIT TO BE CONTROLLED BY IC3 EXTERIOR LIGHTING CONTROLS. IF TIME CLOCK IS IN A REMOTE LOCATION NOT IN CLOSE PROXIMITY TO THE IC3 CONTROLS, CONTRACTOR SHALL VERIFY TIME CLOCK IS SET PROPERLY AND LEAVE CIRCUIT ON TIME CLOCK CONTROL.

- MANUAL CONTROL:

CONTRACTOR SHALL VERIFY THAT NO EXTERIOR LIGHTING IS CONTROLLED MANUALLY. IF ANY EXTERIOR LIGHTING IS ON A MANUALLY CONTROLLED CIRCUIT, CONTRACTOR SHALL ADJUST TO BE CONTROLLED BY PHOTOCELL OR IC3, WHICHEVER IS MOST ECONOMICALLY ACCOMPLISHED.

ADDITIONAL CONTRACTOR NOTES:

CONSTRUCTION COMPLETION VERIFICATION

UPON COMPLETION OF THE WORK, THE CONTRACTOR SHALL PROVIDE VERIFICATION IN WRITING TO THE BANK OF AMERICA PJM THAT ALL WORK IS COMPLETE ACCORDING TO THE CONSTRUCTION DOCUMENTS, AND THAT ALL EXTERIOR LIGHTING IS FUNCTIONING DURING NIGHTTIME HOURS. COMPLETION PHOTOS, TAKEN AT NIGHT, SHALL BE PROVIDED IN THE FOLLOWING FORMAT:

PROVIDE A SINGLE DOCUMENT CONTAINING THE FOLLOWING:

- SITE PHOTOS FROM ALL SIDES OF BUILDING
- MINIMUM OF 3 PHOTOS OF EACH COMPLIANCE AREA (ATM(S), AFTER-HOUR DEPOSITORIES, ASSOCIATE ENTRY) FROM DIFFERENT ANGLES
- MINIMUM OF 2 PHOTOS OF ALL NON-COMPLIANCE AREAS FROM DIFFERENT ANGLES

FIXTURE CLARIFICATION NOTES:

1. OUT OF SCOPE - EXISTING FIXTURES TO REMAIN ON SITE WITHOUT MODIFICATION. NO ACTION REQUIRED UNLESS NOTED OTHERWISE.
2. REMOVE AND PATCH - EXISTING FIXTURES TO BE FULLY REMOVED AND ANY PAINTING, PATCHING OR ELECTRICAL WORK NEEDED IS TO BE ASSESSED AND PERFORMED BY CONTRACTOR.
3. REPLACE EXISTING FIXTURE - EXISTING FIXTURE TO BE FULLY REMOVED AND REPLACED IN THE SAME LOCATION WITH A NEW FIXTURE. CONTRACTOR TO VERIFY IF POLE AND/OR POLE BASE IS SUFFICIENT FOR THE NEW FIXTURES. ANY PAINTING, PATCHING OR ELECTRICAL WORK NEEDED IS TO BE ASSESSED AND PERFORMED BY CONTRACTOR.
4. ADD NEW FIXTURE - NEW FIXTURES TO BE ADDED. ANY PAINTING, PATCHING OR ELECTRICAL WORK NEEDED TO BE ASSESSED AND PERFORMED BY CONTRACTOR.
5. ADD NEW POLE & FIXTURE - A NEW POLE AND FIXTURE TO BE ADDED. CONTRACTOR TO SPECIFY POLE TO MATCH EXISTING STYLE AND COLOR AND, IF NOT PROVIDED, POLE BASE DATA FOR NEW POLE LOCATIONS. CONTRACTOR TO VERIFY IF POLE AND POLE BASE IS SUFFICIENT FOR THE HEIGHT, LOCATION AND FIXTURE SPECIFIED.
6. GMR DOES NOT SPECIFY MOUNTING HARDWARE FOR ANY SPECIFIED FIXTURES. CONTRACTOR IS TO WORK WITH DISTRIBUTOR AND/OR MANUFACTURER ON A CASE BY CASE BASIS TO IDENTIFY AND ORDER REQUIRED MOUNTING HARDWARE.
7. CONTRACTOR TO VERIFY WHETHER EXISTING WIRING LOCATIONS OR THE ADDITION OF WIRING FOR NEW FIXTURE LOCATIONS IS SUFFICIENT FOR THE DESIGNATED FIXTURE LOCATION.
8. CONTRACTOR TO SPECIFY POLE COLOR AND TYPE PRIOR TO ORDERING.
9. ALL FIXTURES ARE ASSUMED BRONZE IN COLOR UNLESS NOTED OTHERWISE IN THE LUMINAIRE SCHEDULE. CONTRACTOR TO CONFIRM PRIOR TO ORDERING.

GENERAL NOTES:

1. EXISTING CONDITIONS SHOWN ON THE DRAWINGS ARE BASED ON A LIMITED AMOUNT OF INFORMATION AVAILABLE TO THE ENGINEER. ALL SUCH CONDITIONS SHALL BE VERIFIED BY THE CONTRACTOR PRIOR TO SUBMITTING THE BID AND ADJUSTED IF NECESSARY. NO ADDITIONAL COMPENSATION SHALL BE GRANTED AFTER AWARDDING A BID FOR ANY EQUIPMENT, MATERIAL OR LABOR REQUIRED TO REWORK OR OTHERWISE MODIFY EXISTING CONDITIONS.
2. THIS LIGHTING DESIGN IS BASED ON A COMBINATION OF STATE STANDARDS, THE BANK'S CURRENT SECURITY POLICY FOR EXTERIOR ATM AND AFTER-HOUR DEPOSITORIES AND BANK GUIDELINES FOR NON-SECURITY COMPLIANCE ZONES.
3. TRIM ALL TREES/LANDSCAPING TO MINIMIZE IMPEDING LIGHT FROM ANY LIGHT FIXTURES THAT IMPACT THE 60' RADIUS AROUND ALL ATMS AND A RADIUS OF 50' AROUND ALL AFTER-HOUR DEPOSITORIES. CONSIDERATION MUST BE GIVEN TO TREES/LANDSCAPING IN A STATE OF FULL FOLIAGE/BLOOM AND FUTURE GROWTH. ALL LANDSCAPING WORK WILL BE PERFORMED BY OTHERS WITH A SEPARATE PERMIT (IF REQUIRED).
4. ALL MOUNTING HEIGHTS ARE INTENDED TO THE BOTTOM OF THE FIXTURE.
5. CONTRACTOR TO FIELD VERIFY FIXTURE PLACEMENT DIMENSIONS PRIOR TO CONSTRUCTION.
6. DIMENSIONING PROVIDED IS FOR PROPOSED FIXTURE LOCATIONS ONLY, UNLESS OTHERWISE NOTED ON THE DRAWING.
7. THE CONTRACTOR SHALL ATTEMPT TO ELIMINATE THE USE OF EXPOSED CONDUIT WHERE POSSIBLE. IF EXPOSED CONDUIT IS NECESSARY, THE CONTRACTOR SHALL VERIFY USE WITH PROJECT MANAGER.
8. ALL EXISTING LIGHTS WILL BE REPLACED WITH LED LIGHTS AND ALL PROPOSED LIGHTS WILL ALSO BE LED, UNLESS OTHERWISE NOTED.
9. ALL FIXTURES ARE TO BE MOUNTED ABOVE FINISH GRADE. UNLESS OTHERWISE NOTED, MATCH EXISTING POLE BASES.

SITE ABBREVIATIONS:

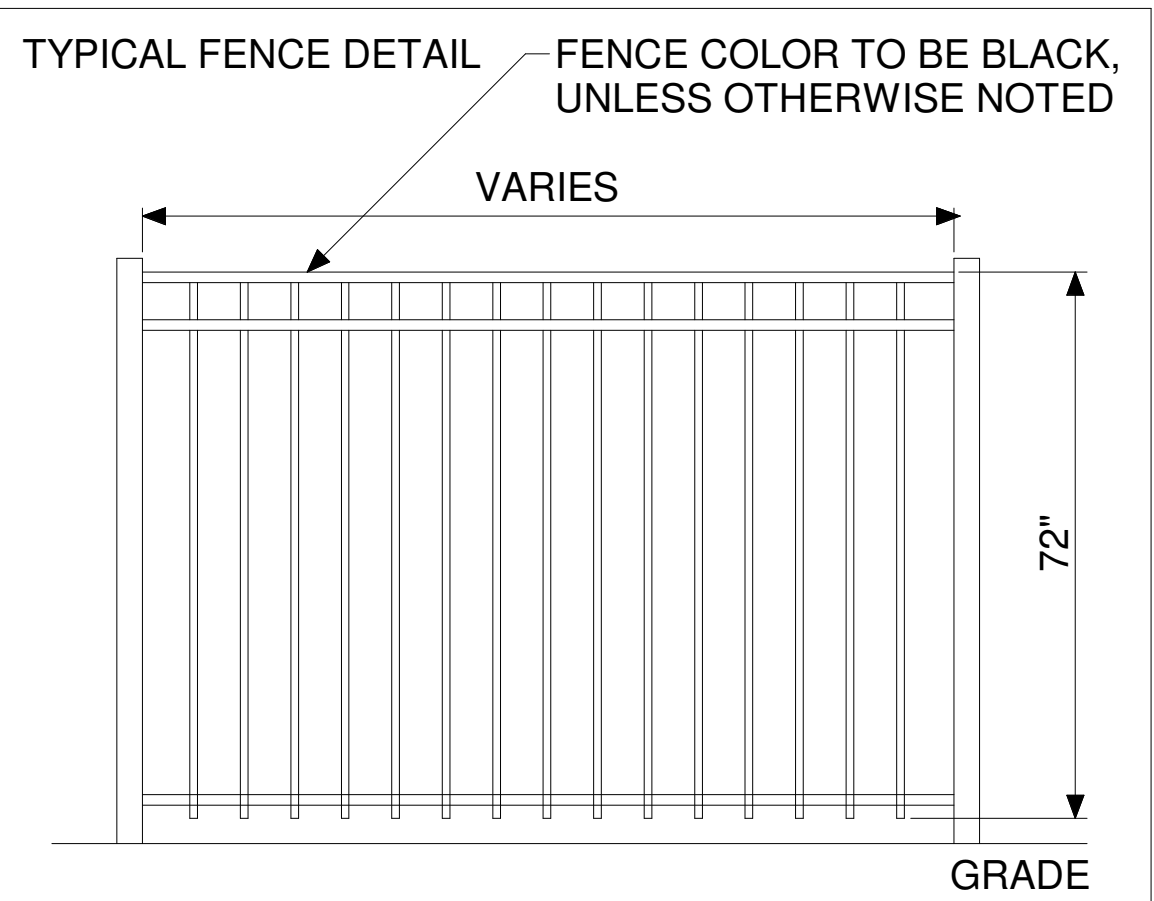
PL = PROPERTY LINE

AFG = ABOVE FINISHED GRADE

FC = FOOTCANDLE

CBO = CONTROLLED BY OTHERS

AHD = AFTER HOUR DEPOSITORY



THIS LIGHTING PLAN ILLUSTRATES ILLUMINATE LEVELS CALCULATED FROM LABORATORY DATA UNDER CONTROLLED CONDITIONS IN ACCORDANCE WITH ILLUMINATING ENGINEERING SOCIETY OF NORTH AMERICAN (IESNA) APPROVED METHODS. ACTUAL SITE ILLUMINATION LEVELS AND PERFORMANCE OF LUMINAIRES MAY VARY DUE TO VARIATIONS IN WEATHER, ELECTRICAL VOLTAGE, TOLERANCE IN LAMPS AND OTHER RELATED VARIABLE FIELD CONDITIONS.

v1 220823

		KRM



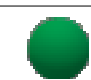






Topsfield Remote  
MAW-206  
253 Boston St  
Topsfield, MA 01983

GENERAL NOTES

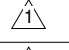
DESIGNED BY:	JDH	DRAWN BY:	JDH
REVIEWED BY:	AWD	APPROVED BY:	KRM

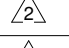
SHEET NO.	LU-1
-----------	------

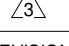


**SEE FIXTURE CLARIFICATION NOTE #9**							LUMINAIRE SCHEDULE	**CONTRACTOR TO VERIFY MOUNTING ACCESSORIES BEFORE ORDERING**					
SYMBOL	TOTAL FIXTURE COUNT	TYPE	NEW POLE COUNT	MANUFACTURER	MODEL	MODEL NUMBER	NOTES	MOUNTING HEIGHT	MOUNTING ACCESSORY	BUG RATING	MOUNTING	TOTAL WATTAGE	
	2	DB1	-	CREE	CDR	CDR-6-ALS(1500L)-9ACK(40K)-10V5-WH-UNV	REPLACE EXISTING FIXTURE	MATCH EXISTING CANOPY HEIGHT	-	B1-U2-G0	RECESSED CANOPY MOUNT	38 W	
	4	GY1	1	CREE	OSQ	OSQ-L-B-22L-40K7-5N-UL-NM-BZ	REMOVE POLE, BASE & FIXTURE - ADD NEW POLE, BASE & FIXTURE	25' AFG	OSQ-ML-B-DA-BZ	B5-U0-G3	POLE MOUNT	528 W	
	1	HW1	1	CREE	OSQ	OSQ-L-B-30L-40K7-3M-UL-NM-BZ	REMOVE POLE, BASE & FIXTURE - ADD NEW POLE, BASE & FIXTURE	25' AFG	OSQ-ML-B-DA-BZ, OSQ-BLSLF	B3-U0-G4	POLE MOUNT	202 W	
	1	SG1	-	CREE	SECURITY EDGE	SEC-EDG-3M-WM-04-E-UL-BZ-350-40K	ADD NEW FIXTURE	10' - 6" AFG	-	B1-U0-G1	WALL MOUNT	46 W	
	6	YA1	-	-	-	-	OUT OF SCOPE	-	-	-	RECESSED CANOPY MOUNT	0 W	
	1	YC1	-	-	-	-	OUT OF SCOPE	-	-	-	WALL MOUNT	0 W	
	4	YH1	-	-	-	-	OUT OF SCOPE	-	-	-	FLOOD	0 W	
GRAND TOTAL WATTAGE											814 W		


v1 220823





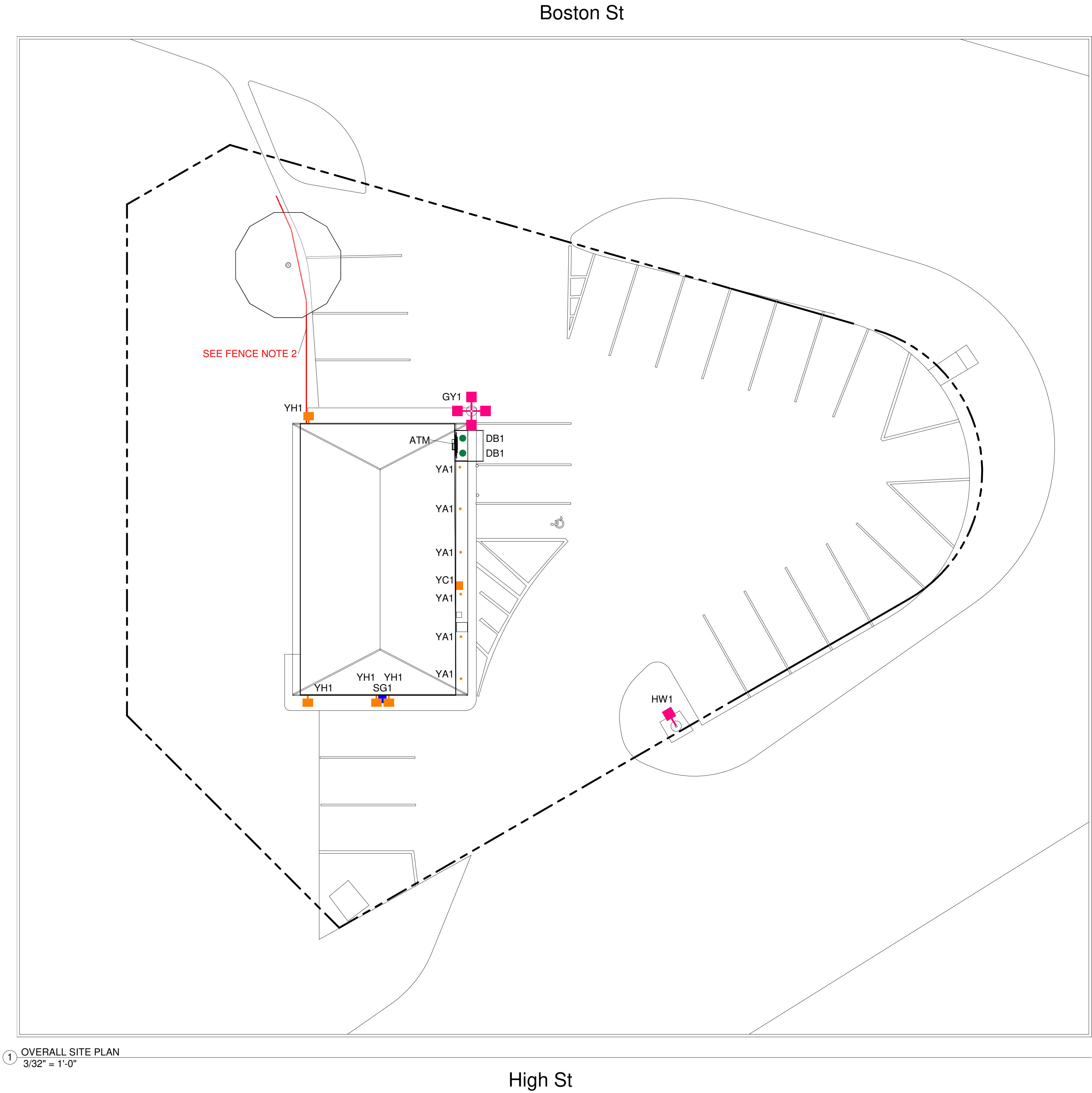


KRM

REVISION NO.	DESCRIPTION	REVISED BY
<div><div>Topsfield Remote MAW-206 253 Boston St Topsfield, MA 01983</div><div>LUMINAIRE SCHEDULE</div><div><div>DESIGNED BY: JDH</div><div>DRAWN BY: JDH</div><div>REVIEWED BY: AWD</div><div>APPROVED BY: KRM</div></div><div><div>THIS LIGHTING PLAN ILLUSTRATES ILLUMINATE LEVELS CALCULATED FROM LABORATORY DATA UNDER CONTROLLED CONDITIONS IN ACCORDANCE WITH ILLUMINATING ENGINEERING SOCIETY OF NORTH AMERICAN (IESNA) APPROVED METHODS. ACTUAL SITE ILLUMINATION LEVELS AND PERFORMANCE OF LUMINAIRES MAY VARY DUE TO VARIATIONS IN WEATHER, ELECTRICAL VOLTAGE, TOLERANCE IN LAMPS AND OTHER RELATED VARIABLE FIELD CONDITIONS.</div><div>LU-2</div></div></div>		



TOTAL FIXTURE COUNT	TYPE	NOTES	MOUNTING HEIGHT
2	DB1	REPLACE EXISTING FIXTURE	MATCH EXISTING CANOPY HEIGHT
4	GY1	REMOVE POLE, BASE & FIXTURE - ADD NEW POLE, BASE & FIXTURE	25' AFG
1	HW1	REMOVE POLE, BASE & FIXTURE - ADD NEW POLE, BASE & FIXTURE	25' AFG
1	SG1	ADD NEW FIXTURE	10' - 6" AFG
6	YA1	OUT OF SCOPE	-
1	YC1	OUT OF SCOPE	-
4	YH1	OUT OF SCOPE	-



Bank of America®



BLUE = NEW FIXTURE  
GREEN = EXISTING FIXTURE LOCATION TO BE REPLACED  
ORANGE = EXISTING FIXTURE TO REMAIN  
TURQUOISE = FIXTURE TO BE REMOVED  
PINK = REPLACE WITH NEW POLE AT NEW HEIGHT  
- - - = PROPERTY LINE BASED ON COUNTY APPRAISAL  
INFORMATION  
- - - = INDICATES NEW SECURITY FENCE



v1 220823

⚠		
⚠		
⚠		KRM

REVISION NO.	DESCRIPTION	REVISED BY
-----------------	-------------	---------------



Topsfield Remote  
MAW-206  
253 Boston St  
Topsfield, MA 01983

OVERALL SITE PLAN

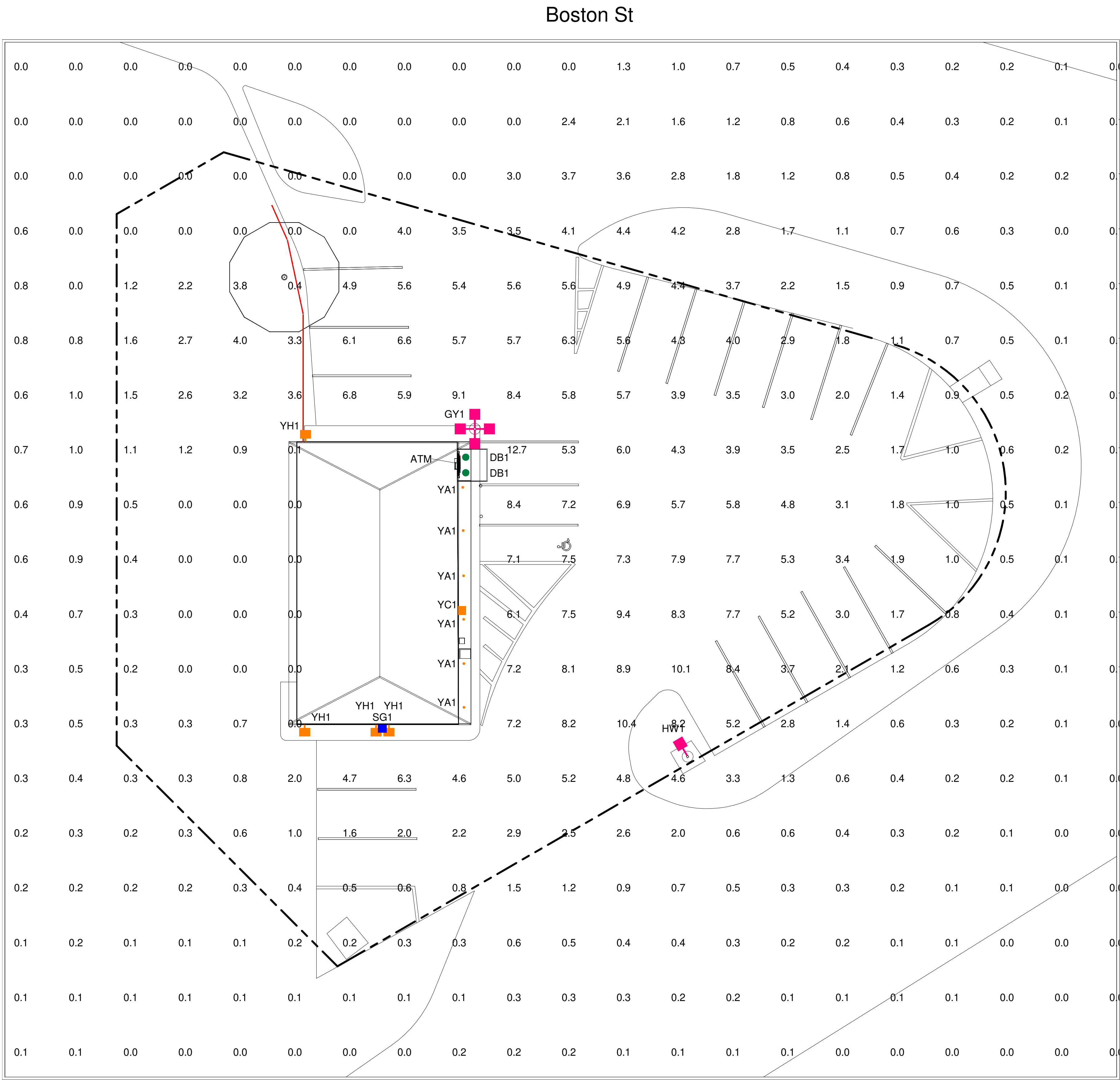
DESIGNED BY:	JDH	DRAWN BY:	JDH
REVIEWED BY:	AWD	APPROVED BY:	KRM

SHEET NO.

LU-3

THIS LIGHTING PLAN ILLUSTRATES ILLUMINATE LEVELS CALCULATED FROM LABORATORY DATA UNDER CONTROLLED CONDITIONS IN ACCORDANCE WITH ILLUMINATING ENGINEERING SOCIETY OF NORTH AMERICAN (IESNA) APPROVED METHODS. ACTUAL SITE ILLUMINATION LEVELS AND PERFORMANCE OF LUMINAIRES MAY VARY DUE TO VARIATIONS IN WEATHER, ELECTRICAL VOLTAGE, TOLERANCE IN LAMPS AND OTHER RELATED VARIABLE FIELD CONDITIONS.

- NOTES:
1. THE SCOPE OF WORK FOR THIS PROJECT IS LIMITED TO EXTERIOR LIGHTING RENOVATIONS AS SHOWN ON THE PLANS.
  2. ALL PROPOSED LIGHTS WILL BE FULL CUTOFF LED LIGHT FIXTURES.
  3. ALL EXISTING LIGHTS WILL BE REPLACED WITH FULL CUT OFF LED LIGHT FIXTURES.
  4. REFERENCE THE LUMINAIRE SCHEDULE (SHEET LU-2) FOR ADDITIONAL LIGHT FIXTURE INFORMATION.



1 FULL SITE PHOTOMETRICS PLAN  
3/32" = 1'-0"

CALCULATION SUMMARY FULL SITE					
Calculation Points Name	Average	Maximum	Minimum	Ave/Min	Max/Min
FULL SITE @ GRADE	1.7 fc	12.7 fc	0.0 fc		0.0

THIS LIGHTING PLAN ILLUSTRATES ILLUMINATE LEVELS CALCULATED FROM LABORATORY DATA UNDER CONTROLLED CONDITIONS IN ACCORDANCE WITH ILLUMINATING ENGINEERING SOCIETY OF NORTH AMERICAN (IESNA) APPROVED METHODS. ACTUAL SITE ILLUMINATION LEVELS AND PERFORMANCE OF LUMINAIRES MAY VARY DUE TO VARIATIONS IN WEATHER, ELECTRICAL VOLTAGE, TOLERANCE IN LAMPS AND OTHER RELATED VARIABLE FIELD CONDITIONS.

Bank of America®



- BLUE = NEW FIXTURE  
GREEN = EXISTING FIXTURE LOCATION TO BE REPLACED  
ORANGE = EXISTING FIXTURE TO REMAIN  
TURQUOISE = FIXTURE TO BE REMOVED  
PINK = REPLACE WITH NEW POLE AT NEW HEIGHT  
- - - = PROPERTY LINE BASED ON COUNTY APPRAISAL INFORMATION  
- - - = INDICATES NEW SECURITY FENCE



v1 220823

⚠		
⚠		
⚠		KRM
REVISION NO.	DESCRIPTION	REVISED BY



Topsfield Remote  
MAW-206  
253 Boston St  
Topsfield, MA 01983

FULL SITE  
PHOTOMETRICS PLAN

DESIGNED BY:	JDH	DRAWN BY:	JDH
REVIEWED BY:	AWD	APPROVED BY:	KRM

SHEET NO.

LU-4

THIS PLAN SET IS PROPRIETARY AND CONFIDENTIAL INFORMATION OF THE BANK AND THE USE OF THIS DESIGN IS PROHIBITED WITHOUT THE EXPRESS PERMISSION OF THE BANK



SHEET INTENTIONALLY LEFT BLANK

v1 220823

		KRM

REVISION NO.	DESCRIPTION	REVISED BY
--------------	-------------	------------



Topsfield Remote  
MAW-206  
253 Boston St  
Topsfield, MA 01983

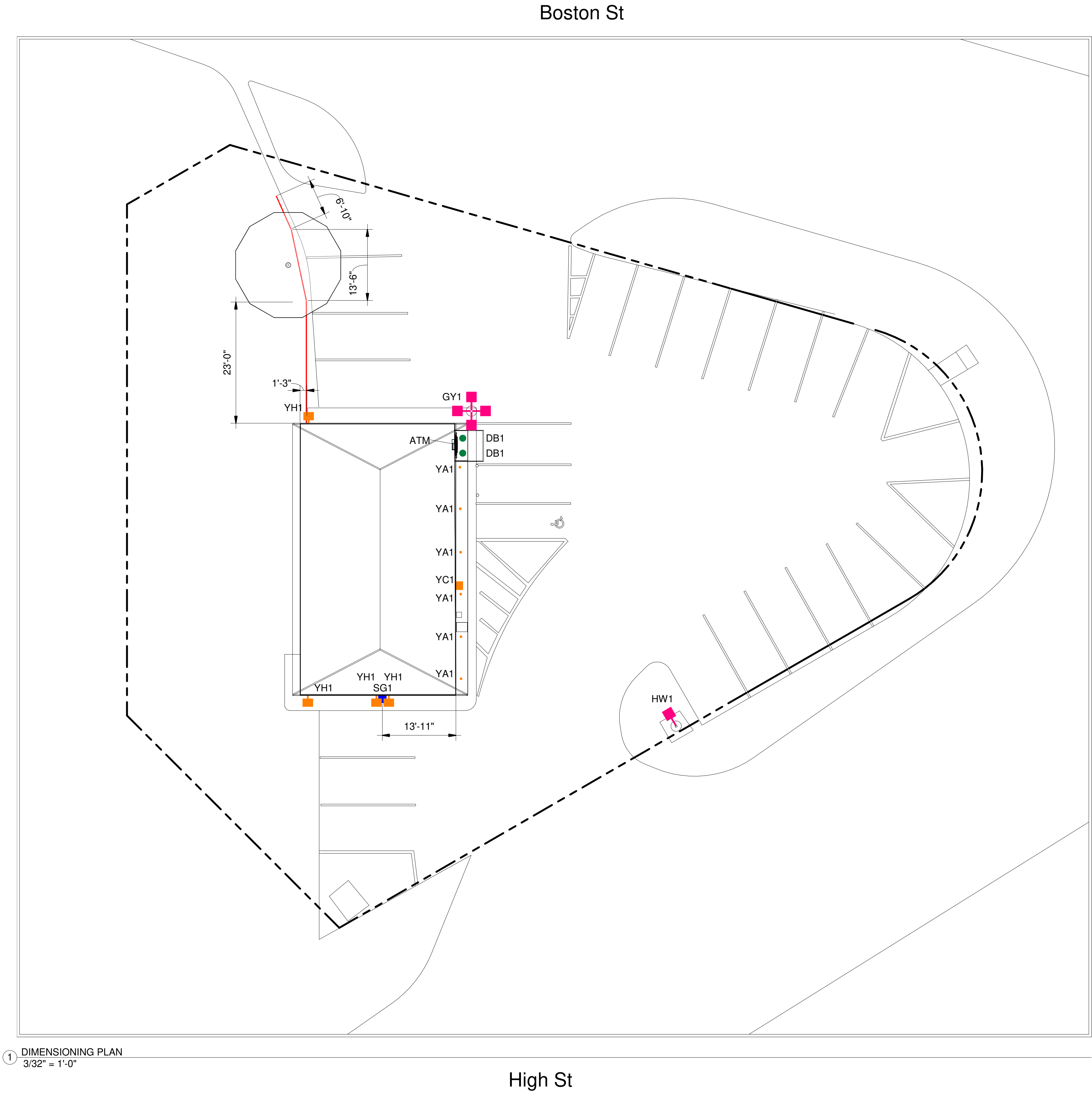
FIXTURE REMOVAL PLAN

DESIGNED BY:	JDH	DRAWN BY:	JDH
REVIEWED BY:	AWD	APPROVED BY:	KRM

SHEET NO.	LU-5
-----------	------



TOTAL FIXTURE COUNT	TYPE	NOTES	MOUNTING HEIGHT
2	DB1	REPLACE EXISTING FIXTURE	MATCH EXISTING CANOPY HEIGHT
4	GY1	REMOVE POLE, BASE & FIXTURE - ADD NEW POLE, BASE & FIXTURE	25' AFG
1	HW1	REMOVE POLE, BASE & FIXTURE - ADD NEW POLE, BASE & FIXTURE	25' AFG
1	SG1	ADD NEW FIXTURE	10' - 6" AFG
6	YA1	OUT OF SCOPE	-
1	YC1	OUT OF SCOPE	-
4	YH1	OUT OF SCOPE	-



Bank of America®



BLUE = NEW FIXTURE  
GREEN = EXISTING FIXTURE LOCATION TO BE REPLACED  
ORANGE = EXISTING FIXTURE TO REMAIN  
TURQUOISE = FIXTURE TO BE REMOVED  
PINK = REPLACE WITH NEW POLE AT NEW HEIGHT  
--- = PROPERTY LINE BASED ON COUNTY APPRAISAL  
INFORMATION  
= INDICATES NEW SECURITY FENCE



v1 220823

⚠		
⚠		
⚠		KRM

REVISION NO.	DESCRIPTION	REVISED BY
--------------	-------------	------------



Topsfield Remote  
MAW-206  
253 Boston St  
Topsfield, MA 01983

DIMENSIONING PLAN

DESIGNED BY:	JDH	DRAWN BY:	JDH
REVIEWED BY:	AWD	APPROVED BY:	KRM

SHEET NO.	LU-6
-----------	------

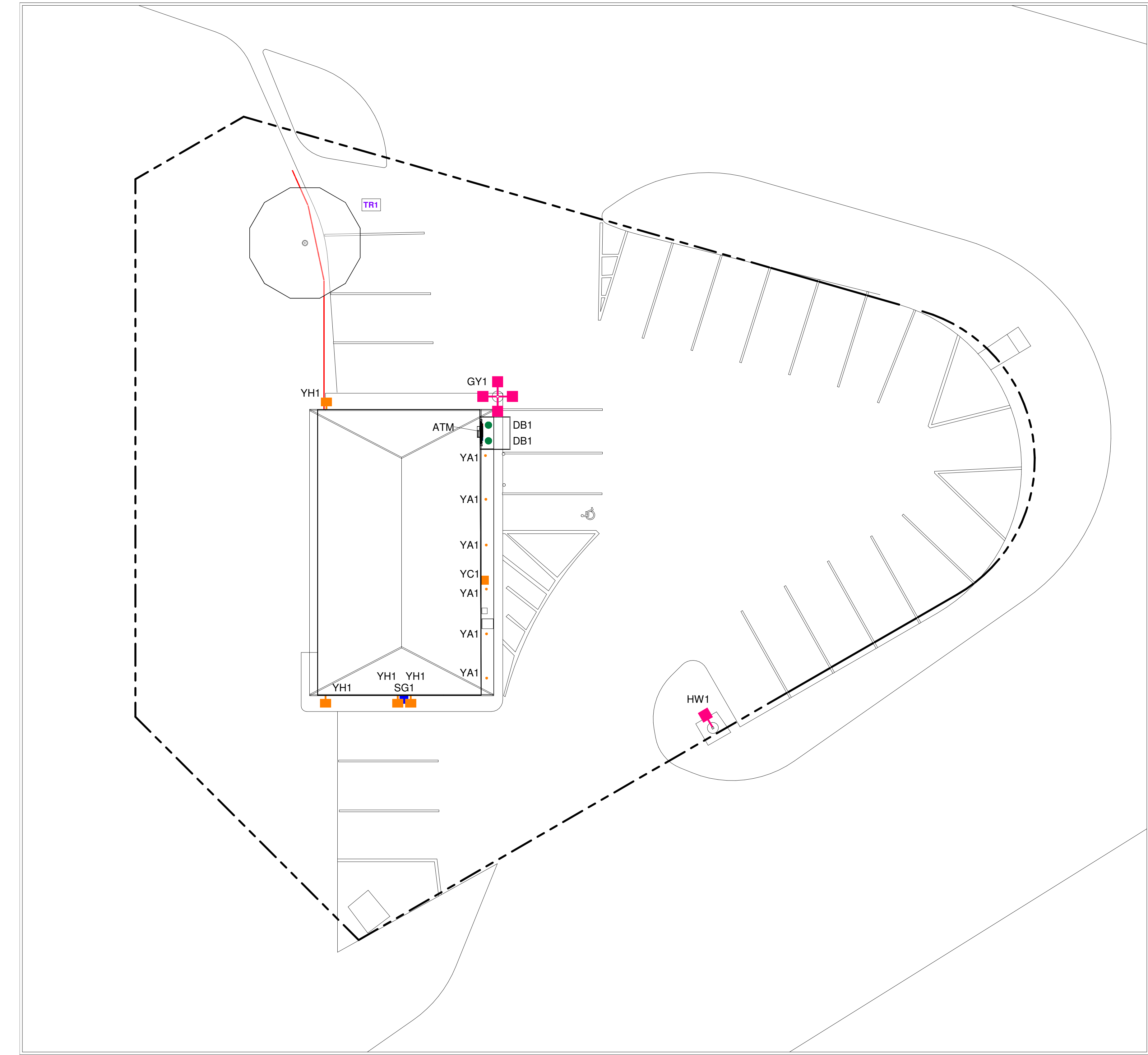
THIS LIGHTING PLAN ILLUSTRATES ILLUMINATE LEVELS CALCULATED FROM LABORATORY DATA UNDER CONTROLLED CONDITIONS IN ACCORDANCE WITH ILLUMINATING ENGINEERING SOCIETY OF NORTH AMERICAN (IESNA) APPROVED METHODS. ACTUAL SITE ILLUMINATION LEVELS AND PERFORMANCE OF LUMINAIRES MAY VARY DUE TO VARIATIONS IN WEATHER, ELECTRICAL VOLTAGE, TOLERANCE IN LAMPS AND OTHER RELATED VARIABLE FIELD CONDITIONS.

Boston St

Bank of America®



- BLUE = NEW FIXTURE
- GREEN = EXISTING FIXTURE LOCATION TO BE REPLACED
- ORANGE = EXISTING FIXTURE TO REMAIN
- TURQUOISE = FIXTURE TO BE REMOVED
- PINK = REPLACE WITH NEW POLE AT NEW HEIGHT
- - - PROPERTY LINE BASED ON COUNTY APPRAISAL INFORMATION
- INDICATES NEW SECURITY FENCE



1 LANDSCAPING PLAN  
3/32" = 1'-0"

High St

v1 220823

⚠		
⚠		
⚠		KRM
REVISION NO.	DESCRIPTION	REVISED BY



Topsfield Remote  
MAW-206  
253 Boston St  
Topsfield, MA 01983

LANDSCAPING PLAN

DESIGNED BY:	JDH	DRAWN BY:	JDH
REVIEWED BY:	AWD	APPROVED BY:	KRM

SHEET NO. LU-7

LANDSCAPE SCHEDULE		
SYMBOL	QTY	NOTE
TR1	1	TRIM TREE UP TO 12' AND THIN OUT TREE CANOPY

GC TO VERIFY WITH LOCAL AUTHORITY HAVING JURISDICTION ON TREE TRIMMING AND/OR REMOVAL PRIOR TO COMMENCING WORK	THIS LIGHTING PLAN ILLUSTRATES ILLUMINATE LEVELS CALCULATED FROM LABORATORY DATA UNDER CONTROLLED CONDITIONS IN ACCORDANCE WITH ILLUMINATING ENGINEERING SOCIETY OF NORTH AMERICAN (IESNA) APPROVED METHODS. ACTUAL SITE ILLUMINATION LEVELS AND PERFORMANCE OF LUMINAIRES MAY VARY DUE TO VARIATIONS IN WEATHER, ELECTRICAL VOLTAGE, TOLERANCE IN LAMPS AND OTHER RELATED VARIABLE FIELD CONDITIONS.		

THIS PLAN SET IS PROPRIETARY AND CONFIDENTIAL INFORMATION OF THE BANK AND THE USE OF THIS DESIGN IS PROHIBITED WITHOUT THE EXPRESS PERMISSION OF THE BANK

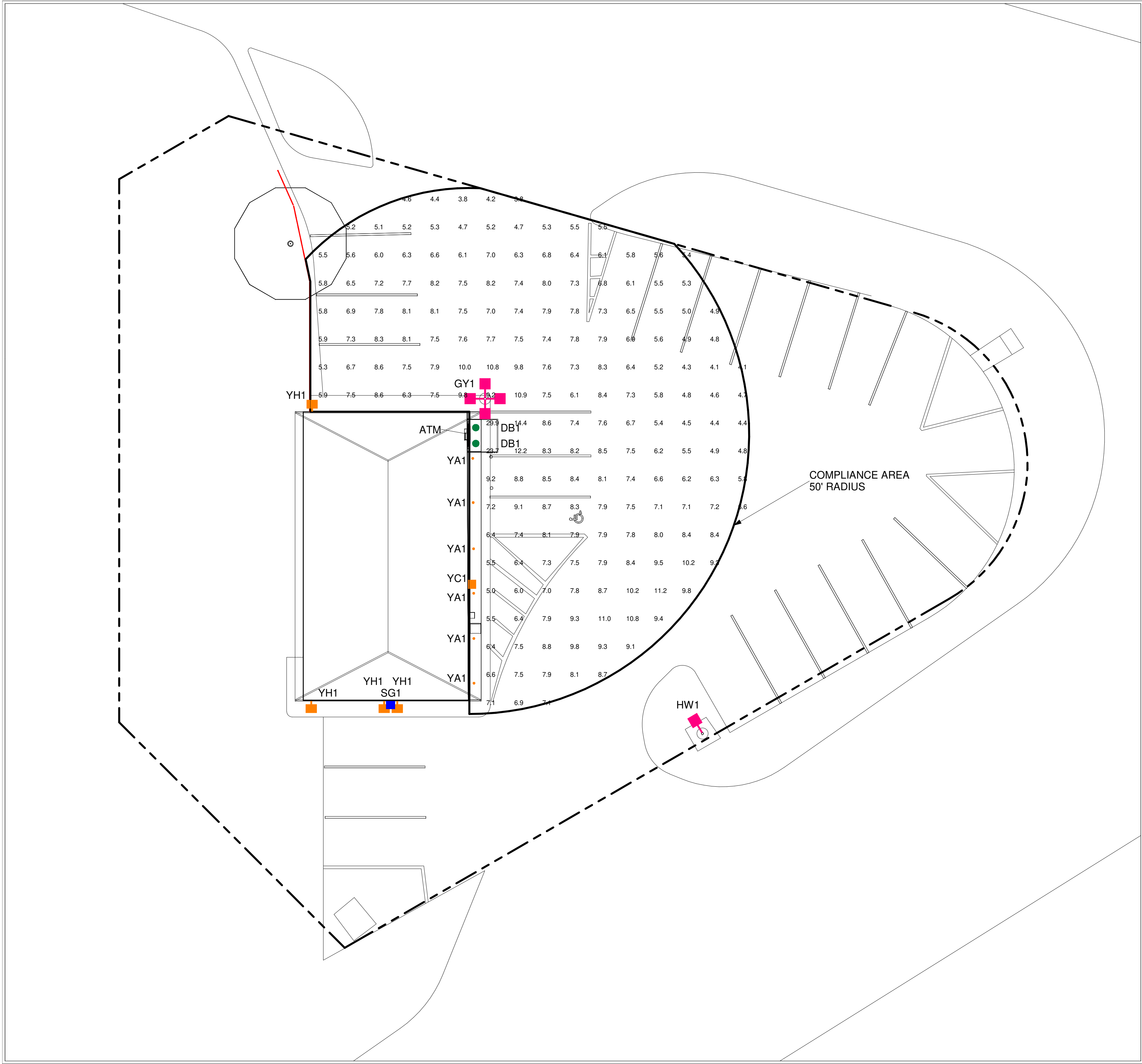


Boston St

Bank of America®



- BLUE = NEW FIXTURE
- GREEN = EXISTING FIXTURE LOCATION TO BE REPLACED
- ORANGE = EXISTING FIXTURE TO REMAIN
- TURQUOISE = FIXTURE TO BE REMOVED
- PINK = REPLACE WITH NEW POLE AT NEW HEIGHT
- - - = PROPERTY LINE BASED ON COUNTY APPRAISAL INFORMATION
- = INDICATES NEW SECURITY FENCE



1 ATM COMPLIANCE AREA PHOTOMETRICS PLAN  
3/32" = 1'-0"

High St

v1 220823

⚠		
⚠		
⚠		KRM
REVISION NO.	DESCRIPTION	REVISED BY



Topsfield Remote  
MAW-206  
253 Boston St  
Topsfield, MA 01983

ATM COMPLIANCE  
AREA PHOTOMETRICS PLAN

DESIGNED BY:	JDH	DRAWN BY:	JDH
REVIEWED BY:	AWD	APPROVED BY:	KRM

SHEET NO.

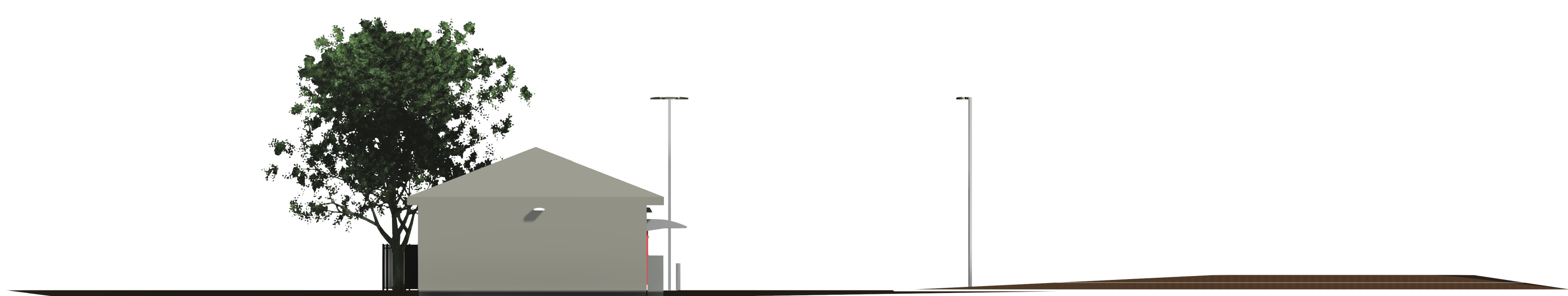
LU-8

- NOTES:
1. READINGS ARE MEASURED AT 36" (3') ABOVE GRADE.
  2. THE SCOPE OF WORK FOR THIS PROJECT IS LIMITED TO EXTERIOR LIGHTING RENOVATIONS AS SHOWN ON THE PLANS.
  3. REFERENCE THE LUMINAIRE SCHEDULE FOR ADDITIONAL LIGHT FIXTURE INFORMATION.
  4. GC TO VERIFY WITH LOCAL AUTHORITY HAVING JURISDICTION ON TREE TRIMMING AND/OR REMOVAL PRIOR TO COMMENCING WORK.

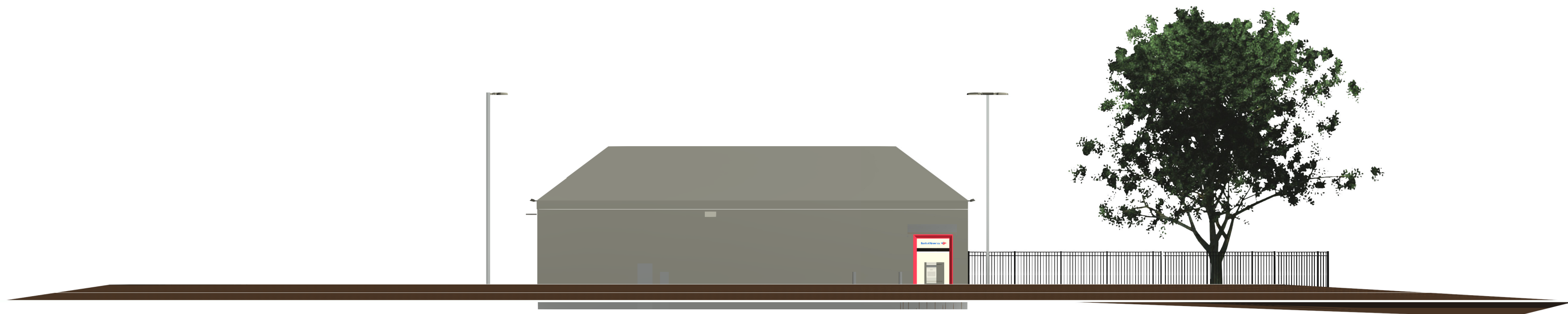
THIS LIGHTING PLAN ILLUSTRATES ILLUMINATE LEVELS CALCULATED FROM LABORATORY DATA UNDER CONTROLLED CONDITIONS IN ACCORDANCE WITH ILLUMINATING ENGINEERING SOCIETY OF NORTH AMERICAN (IESNA) APPROVED METHODS. ACTUAL SITE ILLUMINATION LEVELS AND PERFORMANCE OF LUMINAIRES MAY VARY DUE TO VARIATIONS IN WEATHER, ELECTRICAL VOLTAGE, TOLERANCE IN LAMPS AND OTHER RELATED VARIABLE FIELD CONDITIONS.

CALCULATION SUMMARY COMPLIANCE					
Calculation Points Name	Average	Maximum	Minimum	Ave/Min	Max/Min
ATM 50' @ 36"	7.3 fc	29.9 fc	3.8 fc	1.9	7.8

THIS PLAN SET IS PROPRIETARY AND CONFIDENTIAL INFORMATION OF THE BANK AND THE USE OF THIS DESIGN IS PROHIBITED WITHOUT THE EXPRESS PERMISSION OF THE BANK



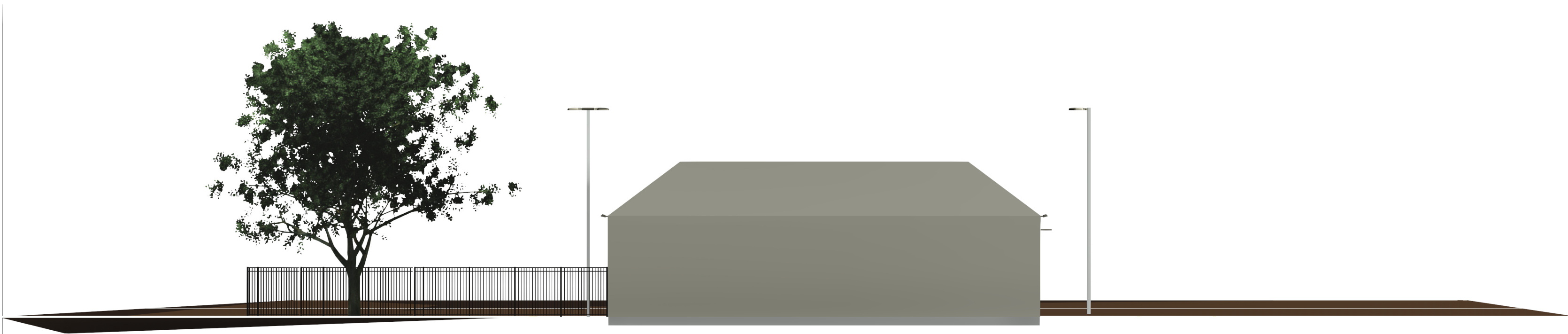
① ELEVATION 1  
3/32" = 1'-0"



② ELEVATION 2  
3/32" = 1'-0"



③ ELEVATION 3  
3/32" = 1'-0"



④ ELEVATION 4  
3/32" = 1'-0"

v1 220823

△		
△		
△		KRM
REVISION NO.	DESCRIPTION	REVISED BY



Topsfield Remote  
MAW-206  
253 Boston St  
Topsfield, MA 01983

ELEVATIONS

DESIGNED BY:	JDH	DRAWN BY:	JDH
REVIEWED BY:	AWD	APPROVED BY:	KRM

SHEET NO.	LU-9
-----------	------