



Topsfield Drive-In Plan of Operation

We would propose to present a 2-screen Drive-In movie theatre in the “Lot A parking lot” from April 1st –January 5th, with blackout dates coordinated with Fair management for other events (i.e. Topsfield Fair). Based upon last years’ interest and enjoyment by the community and the continued uncertainty of COVID restrictions we feel this will remain to be a safe family-friendly form of entertainment. To meet the anticipated expectation and rules of “Hollywood” releasing new movie content next summer we are looking to offer 2 individual movie screens, each featuring their own separate movie. New release movies require their movies to be shown for a set number of days so the 2 screens are important for coordinating movie content and release dates.

COVID Requirements

The Commonwealth of Massachusetts places Drive-In movie theatres under the Phase 1 operating procedures. In addition to the states requirements we also put additional 8’ of spacing between vehicles to give families added social distancing. As we did for our 2020 operating year, we will coordinate our operational model in conjunction with Topsfield Health Agent Inspector Wendy Hansbury to be in line with any changes to the required guidelines.

- All employees will wear masks while working around each other or the public.
- All patrons are required to wear a mask when going beyond their vehicle, to concession stands, and restrooms.
- There will be fence, cones, stanchions, signs, and tape used to create the distance markers anywhere a customer might wait in line.
- There will be hand sanitizers placed in and around restroom and concessions.

Operating days and times

During the months of April – June and September – December we would look to open to the public on Fridays, Saturdays and Sundays, holidays and school vacations. Weekdays would be reserved for special events, private rentals or community fundraisers. From late June – Labor Day we would operate 7 days per week. We would request the same flexible operating hours as last year, from 4pm-11:30pm, to coordinate for sunset and movie duration times. The two screens will have a 15 minute start time gap to reduce traffic congestion entering and exiting the area.

On movie nights, we will open the gates a minimum of 2 hours in advance to allow for a steady stream of entrance into the Drive-In area so that a back-up is not created. When purchasing tickets customers are asked arrive at least 1 hour prior to movie start time, or we may not be able to let them in, as we need time to get everyone safely parked, hatches tied down, etc.

Movies will be announced and tickets will go on sale Monday of each week via website and Facebook. Ticket sales will be sold on-line. There will be limited on-site sales available if not sold out in advance on-line.

Sound

Sound for the movies will be transmitted through car radios via a fm transmitter, but we also offer radios for rent if a customer wants to avoid the risk of draining their car battery.

Concessions:

The concessions will be operated by our in-house team and will be comprised of a main cooking-center and concession service stations. All concessions will have the required social distancing queueing in place. You'll be able to walk up and place your food orders. All food booths will be approved and inspected by required town agents (Health, Fire, Gas, etc.) and have current COVID-19 operating plans in place.

Restrooms

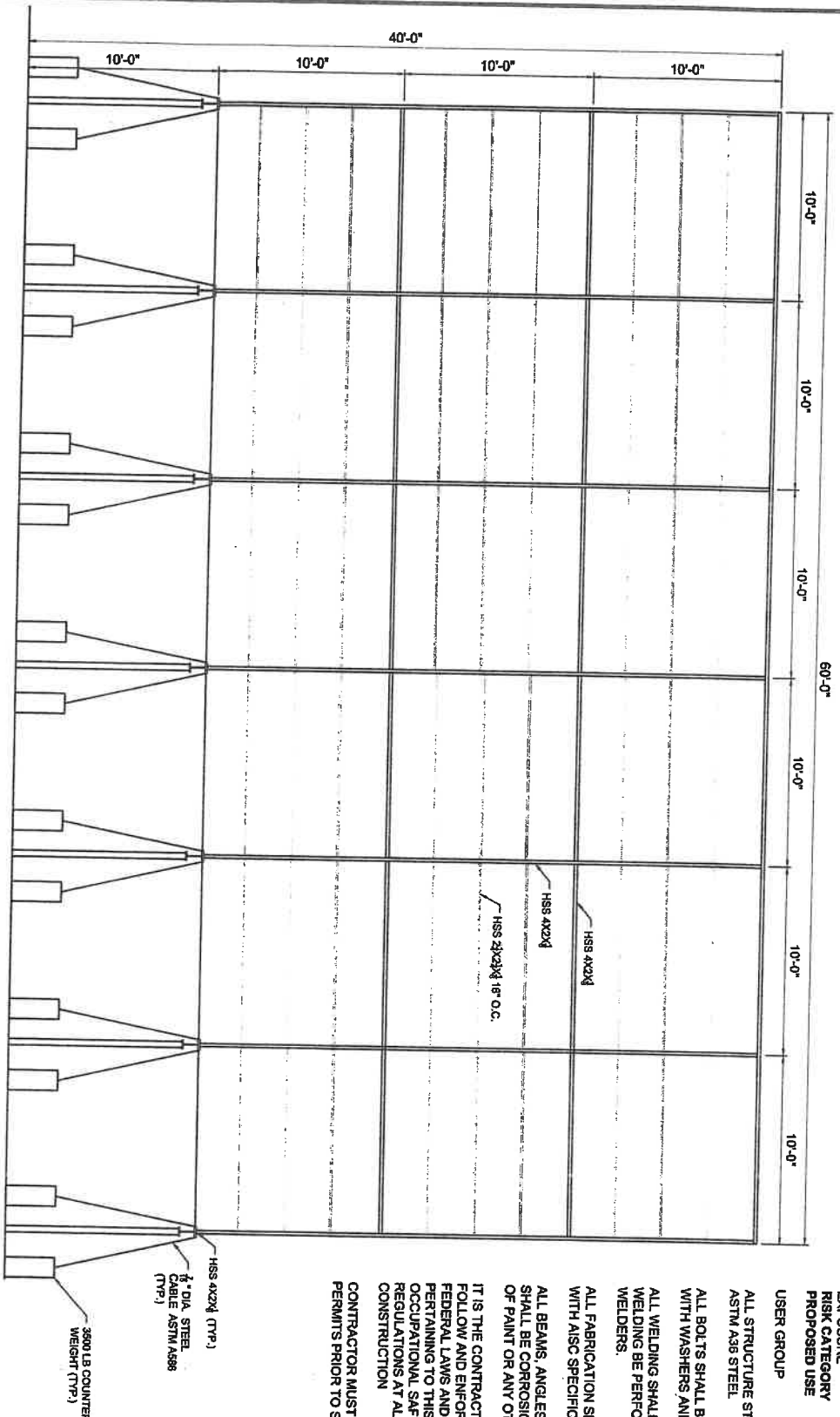
Permanent restrooms and ADA compliant restrooms will be accessed by using the Arena restrooms. Additional "Portable" toilets will be available near the concession stand area.

Traffic Control

Attendants will be on-site, with walkie-talkies, to coordinate customer parking and security. At the end of movie attendants will assist directing customers to the exit. The fairgrounds lighting will be utilized at end of the movies to assist vehicles in leaving the grounds. As per the recommendation of the Topsfield Police Chief we will again utilizing the blinking yellow light located at the entrance and exit to Lot A on operating days for exiting vehicles.

- Screen
- Projector
- Parking Area
- Concessions
- Restrooms
- Entrance
- Exit





FRONT ELEVATION
SCALE: 1" = 1'-0"

DESIGN WIND LOAD VAIL 145 MPH
EXPOSURE C
RISK CATEGORY III
PROPOSED USE DRIVE IN MOVIE THEATER
USER GROUP AS

ALL STRUCTURE STEEL SHALL CONFORM TO ASTM A36 STEEL

ALL BOLTS SHALL BE 1" DIA. GRADE 8 BOLTS WITH WASHERS AND NUTS

ALL WELDING SHALL CONFORM TO AWS. ALL WELDING BE PERFORMED BY AWS CERTIFIED WELDERS.

ALL FABRICATION SHALL BE IN ACCORDANCE WITH AISC SPECIFICATIONS

ALL BEAMS, ANGLES, STIFFENERS AND BOLTS SHALL BE CORROSION PROTECTED BY 2 COATS OF PAINT OR ANY OTHER ACCEPTABLE MEANS.

IT IS THE CONTRACTOR RESPONSIBILITY TO FOLLOW AND ENFORCE ALL STATE AND FEDERAL LAWS AND REGULATIONS PERTAINING TO THIS PROJECT INCLUDING OCCUPATIONAL SAFETY AND HEALTH REGULATIONS AT ALL TIME DURING CONSTRUCTION

CONTRACTOR MUST OBTAIN ALL REQUIRED PERMITS PRIOR TO START OF THE WORK

ISSUED FOR
CONSTRUCTION

PROJECT LOCATION

PROJECT TYPE
PROJECTION SCREEN

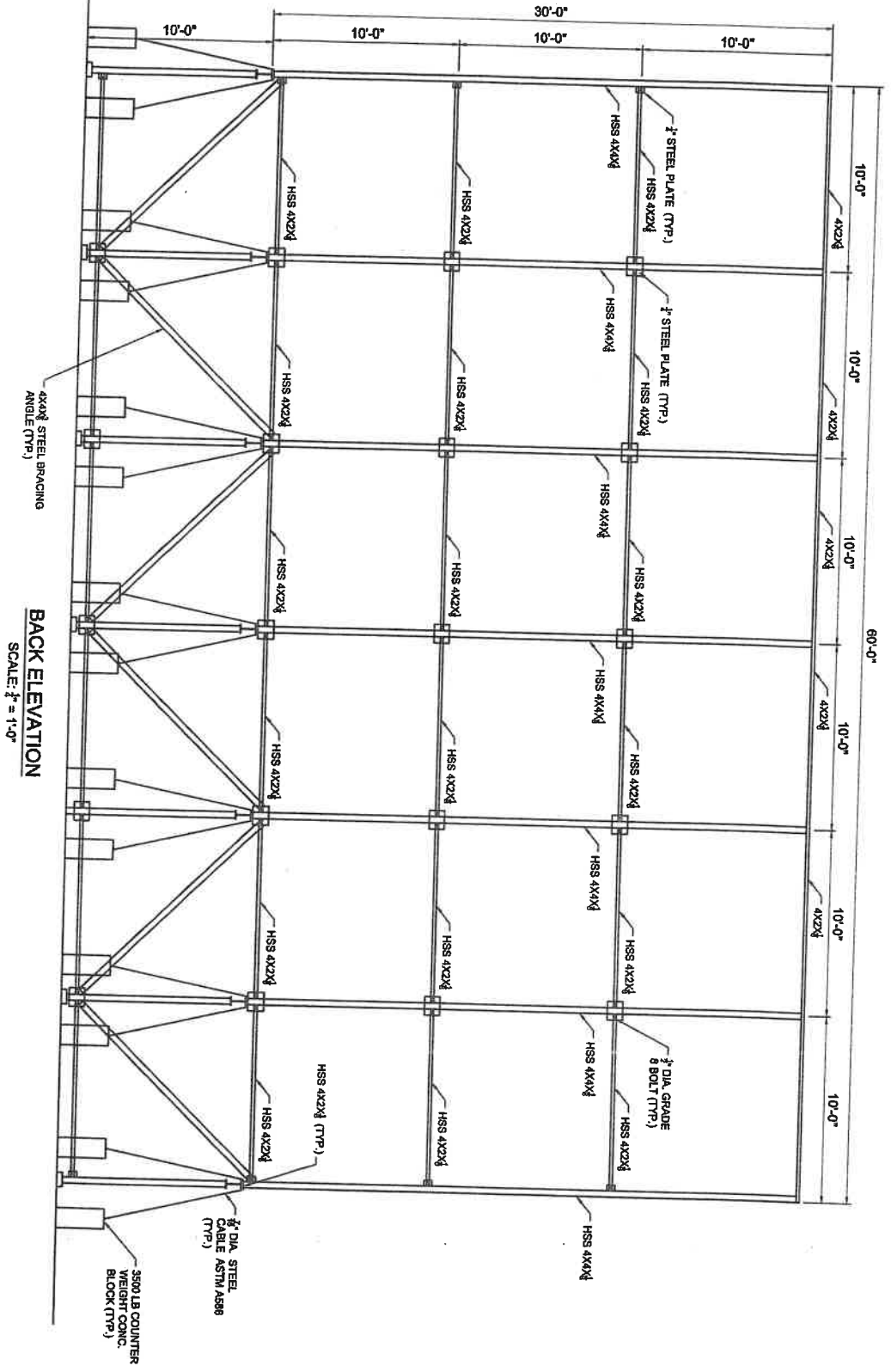
DRAWN BY: SK
CHECKED: SK
JULY 28, 2020

Design by Sami LLC
Structure | Architecture
Design | Residential
Commercial
New Home Construction
Additions

Sami E. Kassir, P. E.
617-460-1041 Office
sami@designbysami.com
www.designbysami.com

81 OceanSide Drive
Scituate, MA 02066





ISSUED FOR
CONSTRUCTION

PROJECT LOCATION

PROJECT TYPE
PROJECTION SCREEN

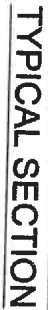
DRAWN BY: SK
CHECKED: SK
JULY 28, 2020

Design by Sami LLC
Structure / Architecture
Design / Residential
Commercial
New Home Construction
Additions

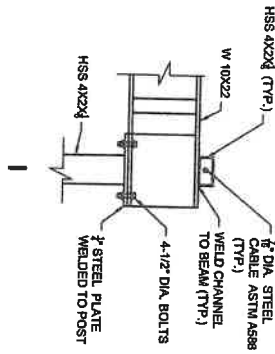
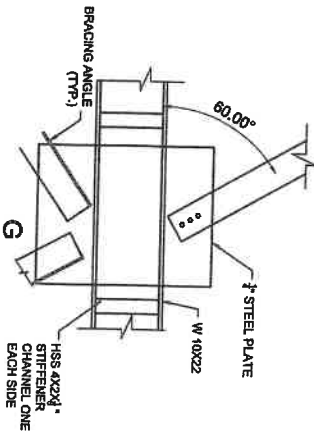
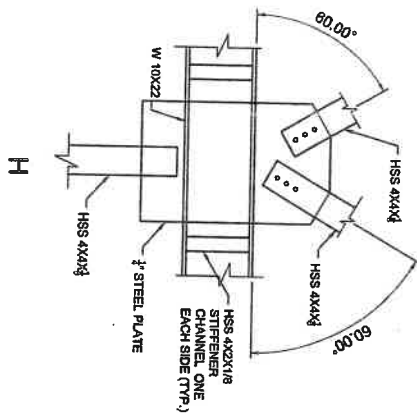
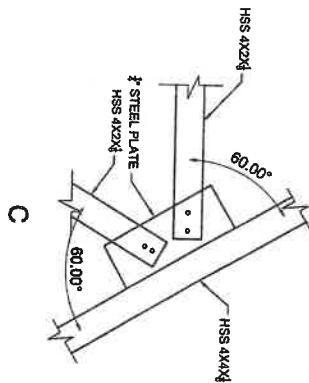
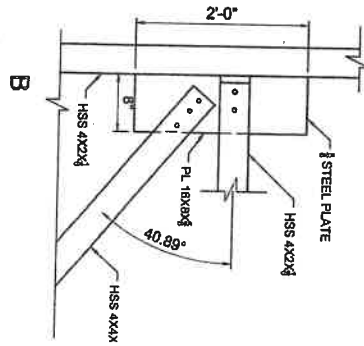
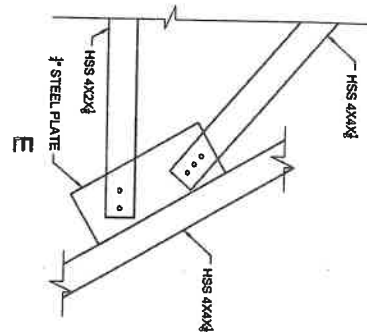
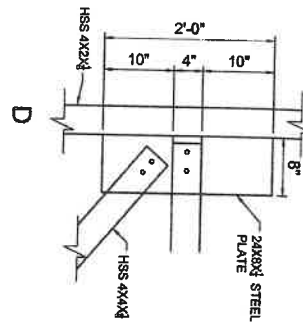
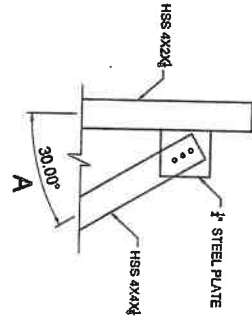
Sami E. Kassab, P.E.
617-460-1041 Office
sami@designbysami.com
www.designbysami.com

111 Ockford Drive
Schaumburg, IL 60196





ISSUED FOR CONSTRUCTION	PROJECT LOCATION	PROJECT TYPE PROJECTION SCREEN	DRAWN BY: SK
			CHECKED: SK
			AUGUST 3, 2020



Design by Sami LLC

Structure | Architecture
Design | Residential
Commercial
New Home Construction
Additions

81 Oceanside Drive
Schaale, MA 02066

Sami E. Kassia, P. E.
617-460-1041 Office

sami@designsami.com
www.designsami.com

ISSUED FOR
CONSTRUCTION

PROJECT LOCATION

PROJECT TYPE
PROJECTION SCREEN

DRAWN BY: SK
CHECKED: SK
AUGUST 3, 2020